

For an
unforgettable key experience.

360°
room comfort



Complete range KfV door hardware

**Experience
room comfort.**
We bring
spaces to life.





More than 100 years of experience.

As a German family enterprise, for four generations now we have been developing future-oriented product solutions, which make your life easier in your everyday fabricating processes, and providing your customers with the security that comes with creating a home or a modern working environment out of four walls. Our products and solutions bring spaces to life and give people a sense of well-being.

Our instinct for the requirements of the market, the developments of the future and for the demands of our customers has made us one of the leading international innovation providers today. We owe this to a staff of more than 2,800 in around 80 countries and to the intensive exchange of ideas with our partners and customers.

Even if we didn't call it "room comfort" before: we have been working on this for over 100 years.

Room comfort with an all-round view.

In all our product developments, we consistently keep an eye on the trends and requirements of the future. Moreover, we combine this with tailored services which integrate each of our partners. But holistic, future-oriented room comfort comprises even more: namely, taking responsibility for our environment with resource-saving processes.

These are targets that we persistently pursue and by which we measure ourselves with conviction and an all-round-view:



- > Future-oriented product solutions
- > Customised services
- > Low-resource processes

**Produce
room comfort.**
Tailor-made to
your requirements.





More solutions from one single source.

With a very diversified product portfolio for modern window systems, door systems and comfort systems, you can obtain everything from one single source with SIEGENIA, to stringently tested quality and with a wide range of innovations. With our KfV door hardware, the range of solutions available for you spans from the complete spectrum of modern multi-point locks to intelligent access control systems.

More flexibility and cost-effectiveness.

KfV door hardware sets new standards, even during the production phase. Due to the unique modular system with uniform routing templates, the high degree of pre-assembly and the freely combinable product families. This allows the flexible and efficient configuration of a large range of variants while the low number of components ensures lean warehousing.

Customised services.

It is often minor details that make such a decisive difference in practice. With SIEGENIA, you have a partner who pays attention to every detail and who is aware of your everyday requirements better than anyone else. For this reason, we have pooled our product systems together perfectly with our complete know-how for you: in service packages that provide precise advice, information or on-site support. Whether this is for your production, training your staff, your marketing or your assembly line: we are there for you!



Developing new markets.

KfV door hardware opens totally new possibilities to develop future markets. With innovative Plug & Play solutions, the fabrication-optimised modular system offers every freedom, meaning that room comfort of the future will begin at the door.



Plan room comfort. You can build on this.



More planning quality with room comfort.

Our high-quality hardware, ventilation and building technology not only provides the building blocks for modern living and room concepts, but also well-coordinated systems. Because only when all room functions work together as one system can a room truly become a living space.

With SIEGENIA you have the freedom to create the comfort that brings spaces to life: room comfort.

Extensive support.

We want to support you with qualified consultation and services. Our team of project consultants and application technicians as well as the corresponding data technology and software are at your disposal for this purpose.



architekten.siegenia.com

KFV door hardware

Overview

08 Multi-point locks

Key operated and lever operated	10
Independent and automatic	14
Electromechanical	20
Access control	22
Integration in third-party systems	24
Plug & Play	26
Multi-point service locks	28

30 Locks

Mortise locks and magnetic locks	32
Latch and deadbolt locks	34
Special locks	36

38 Emergency exits and panic locks

Solutions for escape doors and emergency exit doors	40
---	----

42 Frame parts

Individual striker plates and locking rails	44
Double-sash doors	45
Accessories	46



KFV multi-point locks

Simply multiple benefits: more productivity for you, more variety for your customers.

Uniform routing templates and lean warehousing.

Our perfectly coordinated complete range of multi-point locks provides you with a tailor-made and highly efficient solution for every situation. Our multi-point locks are intelligent modular systems that make your work from fabrication to installation considerably easier. Uniform routing templates for different types of lock and freely combinable product families make prefabrication more efficient, service faster and reduce warehousing.

Tailor-made efficiency.

Uniform routing templates for different types of locks and freely combinable product families.



The new generation of key-operated multi-point locks: the modular system KFV ONE.

With our modular system KFV ONE, the proven KFV system benefits have been subjected to consistent further development and the boundaries of modularity have been completely newly defined. Therefore, fabricators are able to configure a versatile variant spectrum, distinguished by the maximum reduction of essential components, lean warehousing and easy ordering. Simple assembly processes are maintained by the uniform milling and screwing positions which allow cross-series use.

KFV multi-point locks

High-quality key-operated or lever-operated solutions for every situation.

KFV multi-point locks are perfectly coordinated locking systems, which fulfil maximum security and comfort requirements. In the process, robust steel round bolts, clawing hook bolts or a combination of both locking types or comfort mushroom cams are employed in the auxiliary lock case. You can have the optimum solution for every situation due to the fully compatible product programme and the uniform routing templates.

BS 2100 / AS 4100

Multi-point lock with four self-adjusting comfort mushroom cams with continuous height adjustment.



Planning and production

Lock type	Locking part with 4 comfort mushroom cams
Door height can be extended	up to 3,000 mm
Product certification	DIN, SKG, QM 342 in preparation, K-EINBRUCH seal of approval
Intended for resistance class in accordance with EN 1627-1630	up to RC1
Classification according to prEN 15685:2019	BS 2100: 3S500C4010
Latch changeover (DIN right/left adjustable)	⊙
Locking rail with adjustment option +/- 2.5 mm	—
Individual striker plates with adjustment option +/- 2.5 mm	—
Secondary sash lock bolt for double sash entrance doors	⊙

Options for greater room comfort

Soft lock latch	—
Safety lock	—
Day latch	⊙
Bolt switch contact control system	—
Concealed axxent door hinge	⊙

BS 2300 / AS 4340

Multi-point lock with two conical steel round bolts.

BS 2500 / AS 4540

With two conical hook bolts locking from bottom to top.

BS 2600 / AS 4640

The combination of two steel round bolts and two hook bolts for maximum security.



Locking part with 2 round bolts

Locking part with 2 hook bolts

Locking part with round bolt - hook bolt combination

up to 3,000 mm

up to 3,000 mm

up to 3,000 mm

QM 342, DIN, RAL, CE, SKG, K-EINBRUCH seal of approval

QM 342 (BS 2500), QM 314 (BS 2500), DIN, RAL, CE, SKG (AS 4540), K-EINBRUCH seal of approval

QM 342 (BS 2600), QM 314 (BS 2600), A2P (BS2600), DIN, RAL, CE, SKG (AS 4640), K-EINBRUCH seal of approval

up to RC2

up to RC3*

up to RC3*

BS 2300: 3S500C4010

BS 2500: 3S500C4410

BS 2600: 3S500C4410

⊙	⊙	⊙
⊙	⊙	⊙
⊙	⊙	⊙
⊙	⊙	⊙

⊙ for BS 2300	⊙ for BS 2500	⊙ for BS 2600
⊙ for BS 2300	⊙ for BS 2500	⊙ for BS 2600
⊙	⊙	⊙
—	⊙	⊙
⊙	⊙	⊙

* up to RC4 possible for AS2608 / BS2604

* up to RC4 possible for AS2608 / BS2604

Accessories for KfV multi-point locks

For individual security and comfort requirements.

Soft lock latch

For whisper-quiet closing comfort without maintenance expenditure.

Manual closing comfort is not only a question of ease of operation, but also of acoustics. Due to its abrasion-resistant PVC coating, the soft lock latch reduces the closing noise to a quiet clicking. Any maintenance expenditure is omitted because it needn't be greased.



Production benefits

- The latch can be easily replaced without having to open the gear box
- Can be used DIN right or DIN left
- Maintenance-free since the latch does not need to be greased

Swing door roller latch

The comfortable solution for highly frequented doors.

Use of the swing door roller latch means that highly frequented doors can be conveniently opened from the outside by pressing the push plate. It is therefore ideally suitable for shop entrance doors and for main entrances of public buildings.



Production benefits

- Compensation of airgap tolerances due to adjustment screw in the swing door roller latch with large 5-mm adjustment range
- AS variants available preassembled from factory
- Retrofittable for BS variants

Swiss round cylinder

A bundle of assembly benefits.

The well-conceived design allows the installation of complete Swiss round cylinders without having to lower the multi-point locks. All time-intensive work steps for conventional solutions prior to the insertion of the Swiss round cylinder are a thing of the past – from the removal of the pre-assembled multi-point lock gear, the potential removal of a pre-assembled handle set to the lifting and screwing of all components once again.



Production benefits

- Assembly without lowering the multi-point lock
- Significant time-savings
- Low 17.5 mm rear backset

Extension piece

For the extension of key-operated multi-point locks.

The extension piece is suitable for high entrance doors and available in four different versions: for KfV multi-point locks with round bolts, hook bolts, round bolt - hook bolt combinations or comfort mushroom cams.



Production benefits

- For the extension of key-operated multi-point locks BS 2300, BS 2500 and BS 2600
- Length: 500 mm
- The extension set contains: connection driving rod for suspension in the auxiliary lock case

Safety lock

Additional protection when opening the door due to blocking clip.

The opening width of the door can be restricted to a secured gap at any time with the safety lock. The locking lever, integrated in the rebate, can be easily activated with a thumb turn. Depending on the version, unlocking from the outside using the main lock is possible for authorised persons at any time.



Production benefits

- Can be used DIN right and DIN left
- The swivel knob position is adapted to the backset
- Subsequent installation is possible on all AS/BS 2300, 2500, 2600 multi-point locks with "T0" hole group
- Available preassembled for multi-point lock AS 2750
- Sprung index pin with 12.5 mm deadbolt to compensate for airgap tolerances

Additional deadbolt lock

Upgrade your security.

The additional bolt can be operated separately from the inside or from the outside using a key and is designed for profile cylinders.



Production benefits

- Designed for profile cylinder
- 15 mm bolt projection
- Available backset dimensions: 35, 40, 45, 50, 55 or 65 mm backset
- Subsequent installation is possible on all AS/BS 2300, 2500, 2600 multi-point locks with "T0" hole group

KFV multi-point locks

Independent closing or automatic locking for keyless ease of use and constant security.

AS 2750

With triple self-locking function via the main lock and auxiliary lock latches.



AS 3600 / AS 3600 C

With mechanically triggered four-part locking.

AS 3600 C: specially for apartment buildings.



Planning and production

Lock type	3-latch locking part with 2 hook bolts	Automatic locking system with 2 triggering falling bolts and 2 hook bolts
Door height can be extended	up to 2,400 mm	up to 2,400 mm
Product certification	QM 342, SKG	QM 342, SKG
Intended for resistance class in accordance with EN 1627-1630	up to RC3	up to RC2
Classification according to DIN 18251-3:2002	3	—
Classification according to prEN 15685:2019	—	3S500F3030
Latch changeover (DIN right/left adjustable)	⊙	⊙
Locking rail with adjustment option +/- 2.5 mm	⊙	⊙
Individual striker plates with adjustment option +/- 2.5 mm	⊙	⊙
Secondary sash lock bolt for double sash entrance doors	⊙	⊙

Options for greater room comfort

Soft lock latch	⊙	⊙
Safety lock	⊙	⊙
Daytime release	—	⊙
Day latch	⊙	⊙
Bolt switch contact control system	⊙	⊙
Access control systems	—	With A-opener
Concealed axnent door hinge	⊙	⊙

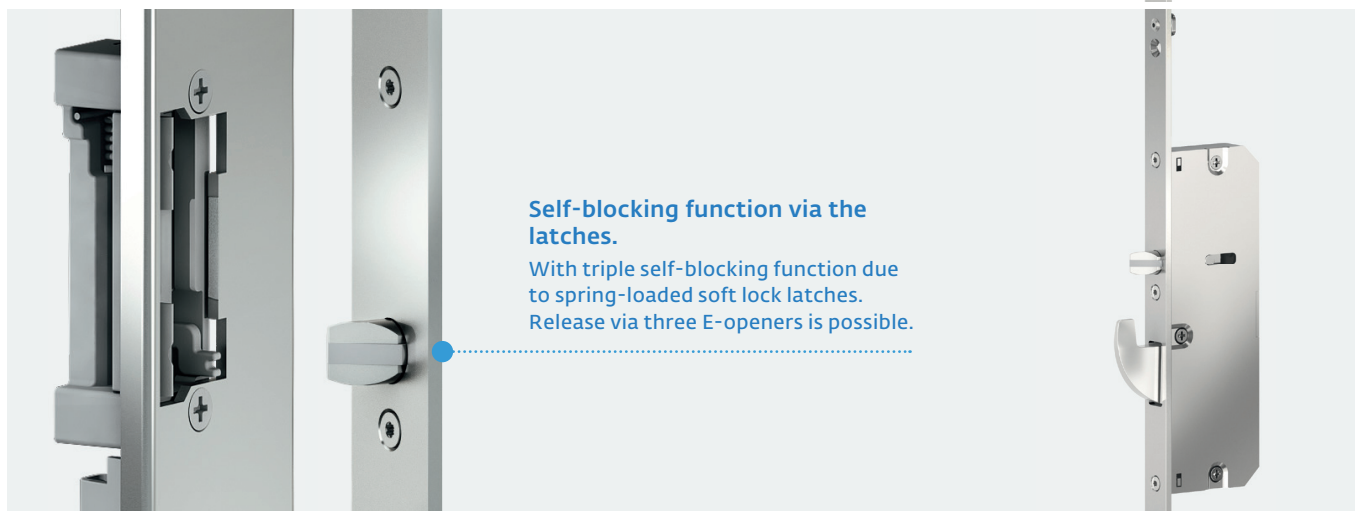
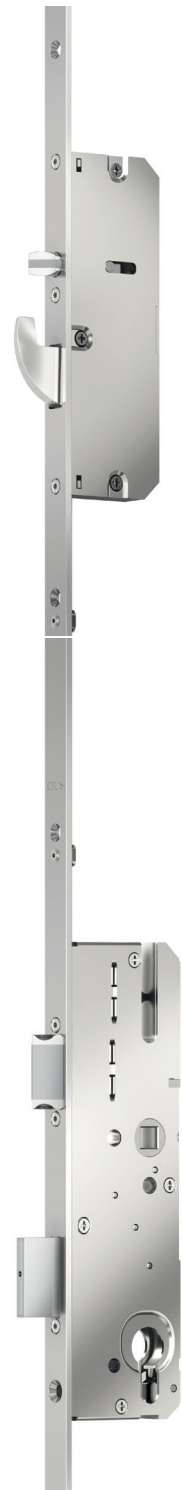
AS 2750

With triple self-locking function via the main lock and auxiliary lock latches.

The AS 2750 three-latch lock is equipped with the main lock latch as well as two sprung soft lock latches in order to fix the door sash three times in the frame by just closing it. This gives long-term protection against door warping and against unauthorised entry attempts, even when unlocked, by pushing the main lock latch back. After locking with the key, the hook bolt-latch combinations ensure burglar resistance up to RC3. The powerful but smooth-running gear ensures excellent sealing, thermal protection and sound insulation even in case of strong pressure or suction load.

Production benefits

- DIN direction can be adjusted, smooth switch-over process
- Standard locking rail can be used
- Release of the door in combination with three E-openers is possible
- Optional with preassembled safety lock T2
- Suitable for apartment doors, residential front doors and the commercial sector



AS 3600

Four-part locking with mechanical trigger.

The AS 3600 automatic multi-point locking system locks four times via two soft lock falling bolts and two robust hook bolts. A mechanical trigger is integrated in the falling bolt, which activates the four locking elements in the auxiliary lock cases upon contact with the frame part. These can be retracted again via the lever handle or key, and then tensioned and locked in place for the next triggering. Burglar resistance up to RC3 can be achieved following locking via the main lock.

Production benefits

- DIN direction can be adjusted, smooth switch-over process
- A-opener 2.2 motor retrofittable for operation via access control system, intercom system or SIEGENIA Comfort app
- Safety lock T3 retrofittable
- Optionally with preassembled safety lock T4: unlocking from the outside using the main lock is possible
- Optionally with the daytime release integrated in the main deadbolt: preassembled or retrofittable by replacing the main lock



Mechanical trigger in the falling bolt.

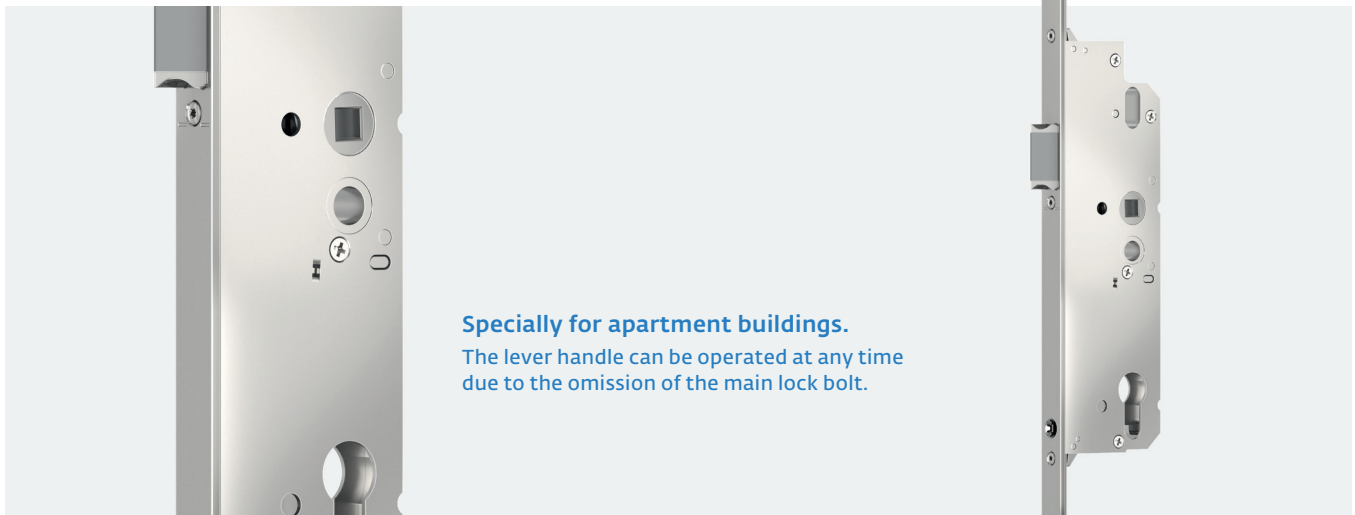
Tolerance-insensitive mechanical triggering of the hook bolts and soft lock falling bolt.
Insurance coverage as soon as you close the door*.

* Depending on the achieved test result of the door element and the declaration of the door manufacturer

AS 3600 C

Secure and comfortable solution for apartment buildings.

The AS 3600 C automatic multi-point locking system is suitable for entrance doors in apartment buildings, which do not need to fulfil the requirements of an escape or panic door (EN 179/EN 1125). It provides the possibility to leave the building quickly and safely at any time without a key, even if the door is locked. The omission of a main lock bolt means that the lever handle can always be operated. Automatic locking via two soft lock falling bolts and two sturdy hook bolts is triggered mechanically.



Production benefits

- The same standard milling dimensions as AS 3600 and AS 3500
- No special frame parts required
- All lock cases are screwed
- A-opener 2.2 motor retrofittable for operation via access control system, intercom system or SIEGENIA Comfort app



Accessories for automatic locking parts

For individual security and comfort requirements.

AS 3600



Daytime release

Easy temporary deactivation of the automatic function.

The automatic function can thereby be quickly deactivated via a small blocking lever. In combination with the KFV day latch or the E-opener in the frame part, you can leave the house temporarily without a key as it is easy to simply "push open" the door.



Safety lock T3 / T4

Additional protection when opening the door due to blocking clip.

The opening width of the door can be restricted to a secured gap at any time with the safety lock. The rebate-integrated safety lock can be easily activated with a thumb turn. Unlocking from the outside using the main lock is possible for authorised persons at any time with the door arrester T4, preassembled in the factory.



- 1 Daytime release
- 2 Safety lock T3
- 3 Electrical A-opener 2.2 motor

Production benefits

- For AS 3600
- Integrated in the main deadbolt: already preassembled or can be retrofitted by changing the main lock
- Use with the KFV day latch or the E-opener in the frame part

Production benefits

- For AS 3600
- Can be used DIN right or DIN left
- The thumb turn position is adapted to the backset
- Sprung index pin with 12.5 mm deadbolt to compensate for airgap tolerances

A-opener 2.2 motor

The simple and flexible retrofit solution for AS 3600 or AS 3600 C.

With the A-opener, the AS 3600 and AS 3600 C automatic multi-point locking systems can be retrofitted to an electromechanical version without any problems in order to be able to release the door electronically. This gives the door a discreet, appealing appearance and makes connection and installation extremely easy. Moreover, the A-opener can be optimally combined with the digital SIEGENIA access control systems or with access control systems from other manufacturers. Even the connection to existing third-party systems is possible thanks to the innovative IO modules.



Can be combined with the digital SIEGENIA access control systems.



Production benefits

- AS 3600 and AS 3600 C
- Compatible with cable transfers and accessories from the GENIUS product line
- The same compact dimensions as with the GENIUS motor
- Easy installation
- Connection to existing third-party systems is possible
- Can be combined with the digital SIEGENIA access control systems: fingerprint scanner, keypad, transponder and with access control systems from other manufacturers

AS 2600 GENIUS

Multi-point lock for electromechanical locking and unlocking.

GENIUS combines the security of a mechanical multi-point lock with the comfort of state-of-the-art electronics. The 2.2 version is equipped with integrated control electronics and a powerful gear motor. This quickly and quietly locks and unlocks both the round bolt-hook bolt combination in the auxiliary lock case and the main lock bolt, and also ensures maximum sealing.

Depending on the version, the GENIUS can be combined optimally with access control systems and many other uses. Even connection to existing third-party systems is possible thanks to the innovative IO modules. This offers you unlimited options in private and commercial property. In combination with motorised door drives, GENIUS can open and close doors completely: for barrier-free living, for example.

Planning and production

Lock type	Electromechanical locking part with round bolt-hook bolt combination
Door height can be extended	up to 3,000 mm
Product certification	QM 342, SKG
Intended for resistance class in accordance with EN 1627-1630*	up to RC 3
Classification according to DIN 18251-3:2002	3
Latch changeover (DIN right/left adjustable)	⊙
Locking rail with adjustment option +/- 2.5 mm	⊙
Individual striker plates with adjustment option +/- 2.5 mm	⊙
Secondary sash lock bolt for double sash entrance doors	⊙

Options for greater room comfort

Soft lock latch	⊙
Day latch	⊙
Bolt switch contact control system	⊙
Access control systems	⊙
Concealed axxent door hinge	⊙

* For GENIUS with comfort function (CA or CB), the hardware must be protected against manipulation from the outside



Production benefits

- The same size variants and identical frame parts as in KfV standard multi-point locks
- Only one additional milling groove for the GENIUS motor
- Identical milling dimensions of main lock and secondary lock as in AS/BS multi-point locks
- Low installation width of only 16 mm and installation depth from 52.5 mm
- Ultra-easy ordering, installation and commissioning due to optional plug & play solutions
- Menu navigation and status messaging in installed state by colour LEDs and/or SIEGENIA Comfort app
- With SI-BUS interface for simple, space-saving direct installation without separate control unit and power supply
- Connection to existing third-party systems is possible
- Can be combined with the digital SIEGENIA access control systems: fingerprint scanner, keypad, transponder and with access control systems from other manufacturers



GENIUS uses electromechanical functions to open and close the door. Control is also possible via the digital SIEGENIA access control systems.



The GENIUS variants

GENIUS EA

With integrated control electronics and electronically controlled gear motor. Can be combined with the digital SIEGENIA access control systems and with systems from other manufacturers.

GENIUS EB

Compared to GENIUS EA, this system can also be combined with external systems such as timers, motorised door drives, or alarm systems.

GENIUS CA/CB

Compared with GENIUS EA/EB, additionally equipped with the "Comfort" quick-opening mechanism for quick mechanical unlocking from the inside using the lever handle.

Access control systems

More control and comfort due to intelligent doors.

Access control systems

Innovative ease of use with future-proof SI-BUS technology.

Our digital access control systems combine clever comfort functions with an elegant appearance and the easiest fabrication. Due to the SI-BUS interface, all three systems can communicate directly with the drive without an additional control unit. This digitalisation facilitates the integration in smart living concepts or for future system extensions. This leaves all options open. Further networking can either be corded via the SI-BUS or cordless via WIFI. The complete SI-BUS is secured with a 128 Bit AES encryption.



Fingerprint scanner

Sensor with touch ID: just put your finger on it.



Keypad

Equipped with a single-use and holiday PIN function.



Transponder

Supports RFID cards with state-of-the-art encryption and maximum data security.

Benefits:

- Modern, uniform design in colours black and signal grey
- With WIFI and Bluetooth chip as standard
- Control via the SIEGENIA Comfort app is possible
- Online remote access, timer and user administration
- 128 Bit AES encryption and access log
- Administration of up to 200 users or 800 features*
- One-time users and interval users
- Optional keyless function
- Connection to existing third-party systems is possible



The colour-adjustable LED lighting enables individual tone-to-tone adaptation to the entrance door. The brightness can be controlled manually or automatically via the light sensor.



* max. number of users is dependent on the type of drives used (A-opener / GENIUS A or B)

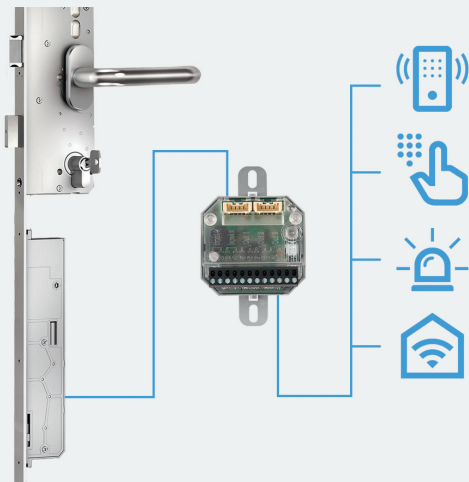
IO module, IO module smart

For universal control and system extension.

IO module

Connect third-party systems with SIEGENIA motors.

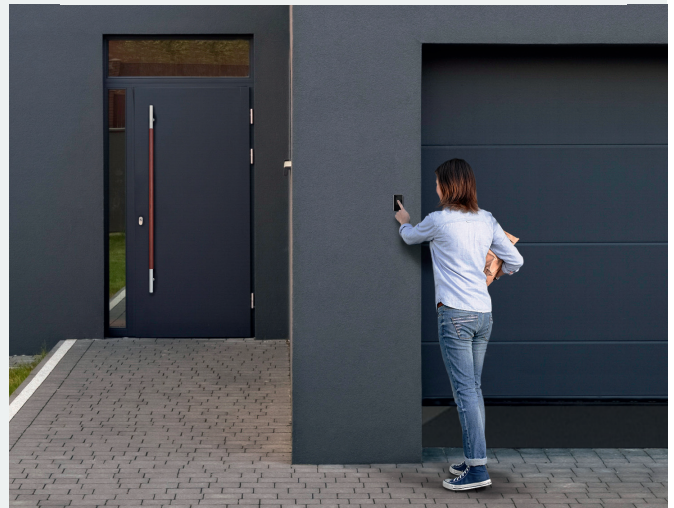
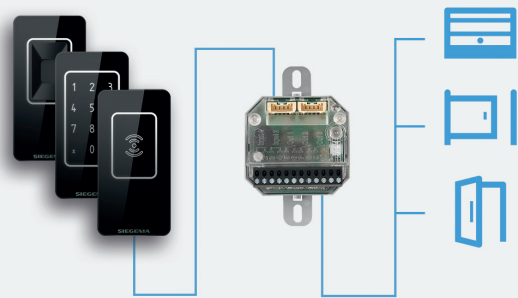
The IO module enables the connection of SIEGENIA solutions with existing third-party systems, for example, intercom systems. This applies to the SIEGENIA motors for entrance doors. Whether we are talking about detached houses or apartment buildings, hotels or schools, hospitals or office buildings: with GENIUS or the A-opener motor and an IO module, you automatically have more options in every entrance area.



IO module

Connect SIEGENIA access control systems with third-party motors.

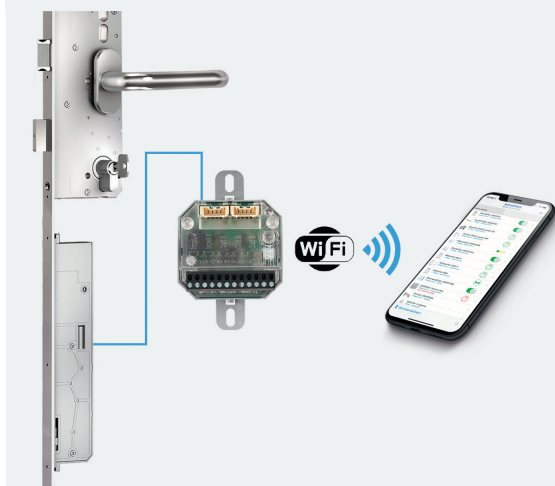
With SIEGENIA access control systems, garage door, roller door and motorised door drives or existing multi-point locks can also be controlled. This functions via the SIEGENIA IO module which works as an interface to flexibly connect drives from other manufacturers with the access control systems.



IO module smart

Operate electromechanical multi-point locks via the SIEGENIA Comfort app.

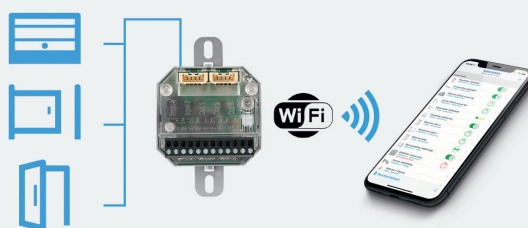
The IO module can additionally communicate via WIFI. In this way, the GENIUS multi-point lock, the A-opener motor as well as the DRIVE axxent DK and DRIVE CL tilt-locking drives can be controlled and monitored via the SIEGENIA Comfort app.



IO module smart

Operate third-party drives with the SIEGENIA Comfort app.

The IO module smart provides a cross-manufacturer interface to integrate third-party drives into the smart SIEGENIA world. With the integrated WIFI chip, devices without their own WIFI capability can be quickly and easily integrated into the SIEGENIA Comfort app.



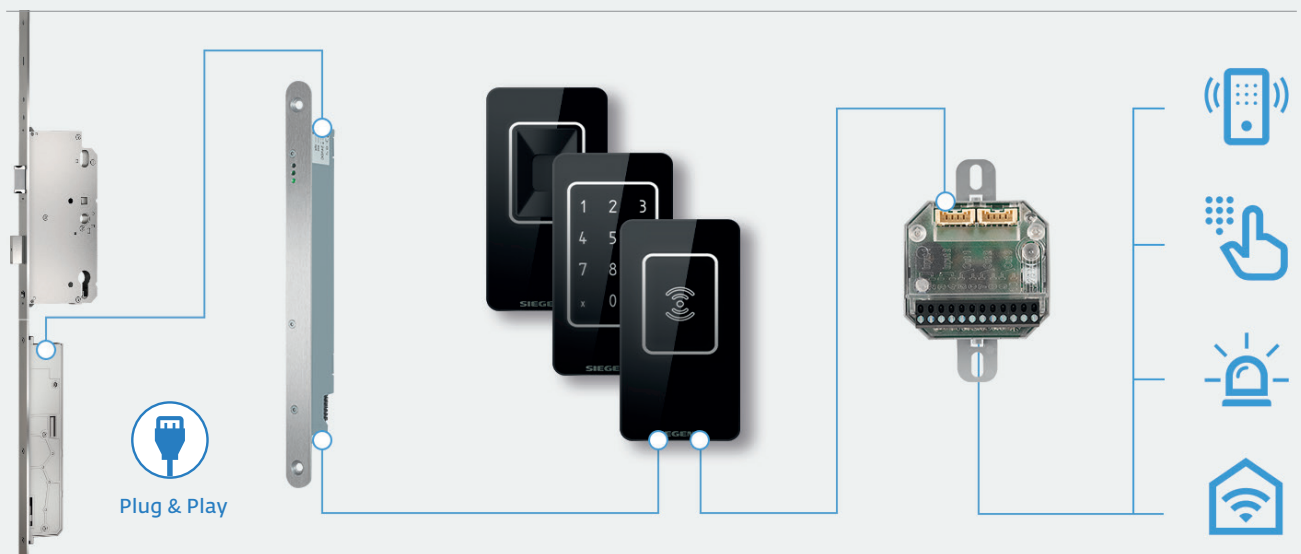
Clever Plug & Play solutions

For easy ordering and quick commissioning.

Plug & Play solutions

Individual Plug & Play solutions: simply more efficiency.

Simplified product processes from the ordering process to the assembly: a set tailored to individual needs and requirements can be assembled from all required components in only a few steps. No electrician required for installation. The engaging plug connections are protected against polarity reversal and the solutions are easily upgradeable by means of modular extension kits, for example, with an IO module.



Production benefits

- Snap-in plug connections, protected against polarity reversal: no electrician required
- Modular extensions are possible
- Sash side or frame side installation of the access control systems possible



Frame-integrated power supply and cable transfer

Concealed and integrated in the door.

The power supply can already be fully installed during production. The power supply is via 230-Volt connection. The cable transfer can be integrated concealed in the door rebate and reduces the installation and maintenance expenditure by means of simple plug connection. For safety reasons, it is only accessible when the door is open.

1 Multi-point lock with motor
AS 2600 GENIUS 2.2
AS 3600 with A-opener 2.2 motor

2 Access control system
Fingerprint scanner
Keypad
Transponder;
sash side or frame side
installation

3 Extension
IO module,
IO module smart

4 Power supply
5 Cable transfer

Multi-point service locks

A quick solution for defective front doors independent of manufacturer.

The multi-point service lock is the ideal solution to quickly repair and maintain front doors for homes and apartments. As a manufacturer-independent system, it can cost-effectively replace a variety of key-operated and lever-operated multi-point locks. The multi-point service lock is available with comfort mushroom cam, H-bar, round bolt, hook bolt or round bolt-hook bolt combination. This is not offered currently by any other solution. Its strength is also verified in burglar resistance. This is proven by the successful test as a burglar resistant retrofit product in accordance with DIN 18104 – Part 2.

Production benefits

- Manufacturer-independent system for all conventional door heights from 1,625–2,400 mm
- Special flat coupling point in profile with U-faceplate with SIEGENIA TITAN AF fine interlocking reduces milling work
- As a rule, the faceplate is made of stainless steel for a high-quality appearance without corrosion on any cut edges
- Freely selectable handle positions
- Secondary sash set can be combined with key-operated or lever-operated main lock sets
- Main lock set is available with backsets of 25 - 80 mm, resulting in reduced warehousing
- DIN direction can be adjusted on site, smooth switch-over process
- Reduction bush of 10 to 8 mm square included in the key-operated variants of the main lock set as standard

Set of faceplates

The set of faceplates includes a top, centre and bottom part for variants with an auxiliary lock case. In this case, a selection can be made between H-bolt, round bolt, hook bolt or a round bolt-hook bolt combination. A variant with a comfort mushroom cam is also available. Coupling with the centre part is accomplished with the especially flat coupling point with fine interlocking.



Main lock set

The key-operated and lever-operated main lock sets are available in many backsets. The key-operated versions are equipped with maintenance-free soft lock latches and a reduction bush of 10 to 8 mm square lever.



Possible with all lock types

The multi-point service lock is available with comfort mushroom cam, H-bar, round bolt, hook bolt or round bolt-hook bolt combinations and for all conventional door heights.





Locks

Solid solutions for all materials.

For all requirements.

We offer a large range of mortise locks, latch and deadbolt locks and special locks for residential and commercial buildings. You are sure to find the right lock here: for interior doors in homes or public buildings, for initial equipment or for subsequent installation.

In all lock classes.

Besides special dimensional specifications, DIN 18251 Part 1 also lays down quality demands for locks, by definition of different classes with regard to the intended purpose. Whatever class of lock you need: with KFV, you will find what you are looking for.

Class 1: for doors that are opened infrequently and carefully: for example, store-room doors.

Class 2: for doors that are opened regularly and carefully: for example, office doors.

Class 3: for doors that are opened frequently and with great force: for example, doors in public buildings.

Class 4: for doors that are opened very frequently and sometimes roughly: for example doors with increased burglar resistance and doors in public buildings.



Almost too beautiful to close.

With the magnetic lock, the latch lies flush in alignment with the gear box when the door is open. It is pulled into the frame part by neodymium magnet technology only when the door is closed. In addition to achieving the highest design standards, this also improves the locking action.

Mortise locks and magnetic locks

For timber doors.

Mortise door locks

More options for all requirements.

With our great spectrum of high-quality mortise locks in accordance with EN 12209, you will always have a solution on hand, which is perfectly matched to the respective frequency of use and security requirements - from doors in private homes to doors in public buildings. Of course, KFV mortise locks are also available for rebated doors or flush doors that close using skeleton keys, bathroom locks or cylinders. They are suitable for initial equipment as well as for uncomplicated retrofitting.

Production benefits

- Certified mortise locks in accordance with EN 12209 for residential, commercial and government buildings
- Durable technology thanks to consistently high quality
- Comprehensive product range with diverse customised solutions
- Individual door design due to different faceplate finishes

Magnetic locks

Streamlined appearance with whisper-quiet locking comfort.

The magnetic latch is mounted flush in the gear box in our innovative magnetic locks. The latch only extends into the frame part and is secured in place by magnetic force when the door is fully closed. In this way it does not knock against the door frame and ensures whisper-quiet and enhanced locking comfort as well as perfect design. The durable system is maintenance-free and remarkably wear-resistant.

Mortise door locks

104-1/2-BB

Mortise lock for interior doors in accordance with DIN 18251-1 Class 1

114-1/2-PZW

Mortise lock for doors in accordance with DIN 18251-1 Class 2

Door profile	104-1/2-BB	114-1/2-PZW
Interior / room doors	⊙	⊙
Entrance doors and side entrance doors		

Special features



Mortise door locks
up to class 4

Magnetic lock 116
for flush-closing doors



113-1/2-PZW

Mortise lock for doors in
accordance with
DIN 18251-1 Class 3

1133-1/2-PZW

Mortise lock for doors in
accordance with
DIN 18251-1 Class 3

63-1/2-PZW

Mortise lock for doors in
accordance with
DIN 18251-1 Class 4

116

Magnetic mortise lock
for interior doors

Timber

Timber

Timber

Timber



Particularly suitable for use in
public buildings

Particularly suitable for use in
public buildings; enhanced
burglar resistance

Flush design when door is
open, quiet and wear-free,
stainless steel, matt brushed
or painted white or black

Latch and deadbolt locks

For PVC and metal doors.

Our extensive selection of high-quality latch and deadbolt locks in accordance with EN 12209 opens up versatile solutions for numerous profile situations. KFV latch and deadbolt locks are available with single turn or double turn, with different deadbolt projections, various backsets as well as different faceplate variants and surface finishes. They are suitable for initial equipment as well as for uncomplicated retrofitting.

Production benefits

- Certified mortise locks in accordance with EN 12209 for residential, commercial and government buildings
- Durable technology thanks to consistently high quality
- Single turn or double turn with deadbolt secured against sawing
- Extensive product range: diverse backsets (18–65 mm) and faceplate variants as well as different deadbolt projections (15, 20 and 25 mm)
- Individual door design due to different faceplate finishes
- Many customised solutions

Latch and deadbolt locks

28-PZW

Latch and deadbolt mortise lock for doors in accordance with DIN 18251-2 Class 1

49-PZW

Latch and deadbolt mortise lock for doors in accordance with DIN 18251-2 Class 3

59-PZW

Latch and deadbolt mortise lock for doors in accordance with EN 12209 2S800C4*BC20

Door profile	Metal, PVC	Metal, PVC	Metal, PVC
Interior / room doors	⊙	⊙	⊙
Entrance doors and side entrance doors	⊙	⊙	⊙
Special features	Deadbolt, single turn, 15 mm deadbolt projection	Deadbolt, single turn, 20 mm deadbolt projection	Deadbolt, double turn 25 mm deadbolt projection

[⊙] in conjunction with protected striker plate lock case



Latch and deadbolt mortise locks
up to 25 mm bolt projection



Special locks for special applications.

The unique KfV product range offers you the maximum range of solutions in the area of special applications. Here you will always find the right solution for your special requirements, for example locks for sliding doors with hook bolts or radius bolts and locks for radiation protection doors. This is supplemented by a range of further locks for fire protection doors.

Diverse versions for a wide range of application areas

Steel doors
Radiation protective doors
Sliding doors
Swing doors

Swing door roller latch
Deadbolt lock



Deadbolt lock



Roller bolt lock





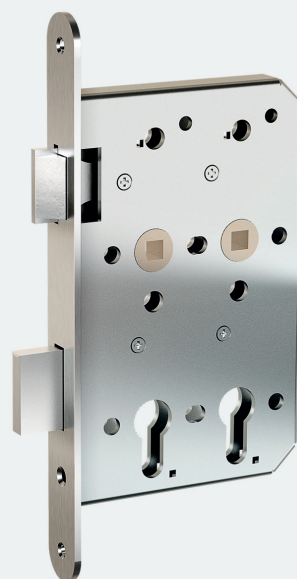
Sliding door lock



Sliding door lock



Lock for radiation protective door





Emergency exits and panic locks

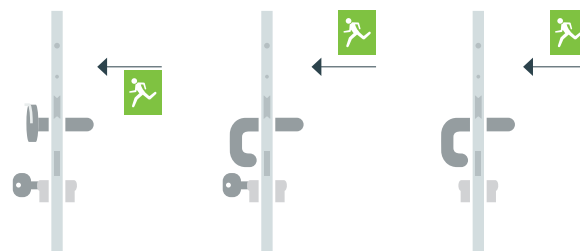
Reliable solutions in accordance with EN 179 and EN 1125 with maximum efficiency and functional safety.

The complete panic range.

Our complete range of locks and multi-point locks offers various tried-and-tested solutions for fire rated doors, emergency exit locks in accordance with EN 179, and panic door locks in accordance with EN 1125. These stringently tested lifesavers can be operated intuitively, but also fabricated very easily and efficiently. We have revolutionised the fabrication processes for double-sash panic exit doors with an assembly-friendly three-part solution, for which the innovative driving rod technology minimises the milling expenditure for the panic secondary sash lock bolt as well as the total production time.

Locking functions B, D and E.

Locks and multi-point locks for escape doors can be opened in the direction of escape without a key at any time, even when they are locked. After using the escape function and closing the door, access against the direction of escape is either blocked again or it can be made possible to re-enter the building.



Solutions for escape doors and emergency exit doors

Reliable single or double-sash escape doors, smoke and fire protection.

All multi-point locks and special locks from the extensive KfV panic range offer you stringently tested and flexible solutions, which are distinguished by maximum functional safety and intuitive operation. Because every second counts, not only in emergency situations, but also during fabrication, the multi-point locks for all escape door functions are always based on the same main lock families and on auxiliary lock cases with identical dimensions. The DIN direction can be simply adjusted via the latch. Direction of escape can also be adjusted on the main lock for locking functions B and D.

Multi-point locks for escape doors

	EP 960 Panic locking part in accordance with EN 179 and EN 1125	GEP EP 960 Electromechanical locking part in accordance with EN 179 and EN 1125
Lock type	Round bolt-hook bolt combination	Round bolt-hook bolt combination
Door height can be extended	up to 2,400 mm	up to 2,400 mm
Intended for resistance class in accordance with EN 1627-1630*	up to RC 3	up to RC 3
Classification according to DIN 18251-3:2002	3	3
Fire-rated doors	⊙	⊙
Emergency exit and panic doors	⊙	⊙
Latch changeover (DIN right/left adjustable)	⊙	⊙
Locking rail with adjustment option +/- 2.5 mm	⊙	⊙
Individual striker plates with adjustment option +/- 2.5 mm	⊙	⊙
Secondary sash lock bolt for double sash entrance doors	⊙	⊙

Options for greater room comfort

Soft lock latch	optional	optional
Day latch	⊙	⊙
Bolt switch contact control system	⊙	⊙
Access control systems	—	⊙
Concealed axxent door hinge	⊙	⊙

* The hardware must be protected against manipulation from the outside.



Time-saving in case of emergency and in production

- Modular structure with uniform routing templates and screw positions
- Simplest assembly due to omission of threaded rods
- DIN direction and escape side for function B can be individually adjusted
- Diverse backsets and PZ dimensions available
- All locks and multi-point locks can be universally used for EN 179 and EN 1125 and can be delivered in locking functions (B, D or E)
- Solutions for all conventional secondary sash profiles in timber, PVC or metal for door elements with an overall height up to 2,400 mm
- When the inactive sash of a double-sash escape door is opened, the main sash also automatically unlocks, freeing the entire escape route
- KfV GENIUS PANIC GEP: automatic locking and release for the locking functions B and E possible



Locks for escape doors

EP166

Panic mortise lock for emergency exit and panic doors in accordance with EN 179 and EN 1125

EP99

Panic deadbolt mortise lock for emergency exit and panic doors in accordance with EN 179 and EN 1125

Door profile	Timber	Metal, PVC
Interior / room doors	⊙	—
Entrance doors and side entrance doors	⊙	⊙
Fire-rated doors	⊙	⊙
Emergency exit and panic doors	⊙	⊙



Frame parts

The optimum frame range for all materials and profile systems.

Efficient versatility.

You will also benefit in several ways with our frame parts: because for KFV, not only every lock and every multi-point lock, but also every frame part belongs to a modular system concept – with freely combinable product families, clever uniform dimensions and real innovations. With few component designs and without special frame parts, this offers a maximum diversity of solutions, simple work steps and minimum warehousing.

Practical innovations.

The eccentric compression adjustment with its unique adjustment range of ± 2.5 mm at a low installation depth is the best on the market. This simplifies the installation and provides very high compression for protection against gusts of wind and driving rain. Our frame parts with compression adjustment can be used with all multi-point lock types with round bolts, hook bolts (6 mm / 8 mm) or round bolt-hook bolt combinations. An appealing appearance and easy assembly are ensured by the profiled and easily positioned end caps and the deadbolt lining, which completely conceals the punched hole and can be conveniently inserted from the front.



Simple installation.

- ① Pressure adjustment: optimum compression and best tolerance compensation.
- ② Deadbolt lining: can be conveniently applied from the front and is available in various installation depths.
- ③ Profiled end caps: for correct positioning and an elegant appearance with various PVC profiles.

Individual striker plates and locking rails

Maximum solution diversity in a modular system.

Individual striker plates

The high-quality solution for all lock designs.

With these high-quality individual striker plates, you have a visually appealing and universally applicable solution for all lock types at hand with just one design, which can be optimally fabricated and flexibly adjusted by means of numerous innovations.



Locking rail

More stability and security in a continuously elegant appearance.

This sturdy locking rail, which can be used for different lock versions, increases the security and enables an uninterrupted frame part design. The assembly is improved as only one part is fixed. Moreover, you benefit from all advantages provided by the individual striker plates.



Production benefits

- Easy to install and cost-effective
- One variant for all locking parts
- Continuous compression control of the main lock latch via the AT piece
- Deadbolt lining in various installation depths: can be inserted from the front
- Auxiliary lock case: perfect tolerance compensation with eccentric compression control for round bolts and hook bolts of +/- 2.5 mm
- Profiled end caps for easier positioning

Production benefits

- Easy installation, as only one part needs to be fixed
- One variant for all locking parts
- With chamfer and continuous compression control of the main lock latch provided by the AT-piece
- Perfect tolerance compensation: with eccentric compression control of +/- 2.5 mm for round bolts and hook bolts
- Deadbolt lining in various installation depths: can be inserted from the front

Double-sash doors

More quality with ease from secondary sash to bottom keep.

Secondary sash lock bolt

More comfort and efficiency for high-quality inactive sashes.

KFV secondary sash lock bolts combine security and a clear design with efficient assembly and stock-holding. Comfort is also a top priority here. For example, the T-handle for the BS80 automatically protrudes at the push of a button, facilitating locking and unlocking. Fully flush when not in use, the system is also easy to clean.



Bottom keep

Less friction and considerably less tolerance sensitivity.

With its generous compression adjustment of +2 to -1 mm, this bottom keep compensates installation tolerances very flexibly and simplifies operation of the shoot bolt long-term due to minimum friction.



Production benefits

- For the inactive sash of double sash entrance doors
- Available for right or left side installation according to the DIN direction of the active sash
- Can be combined with mechanical and electromechanical KFV multi-point locks

Production benefits

- Optimally aligned with the KFV secondary sash hardware and shoot bolt
- Compression adjustment from +2 to -1 mm for optimum compensation of installation tolerances
- Compensation rings available in inclines of 5° and 9° for adaptation to thresholds

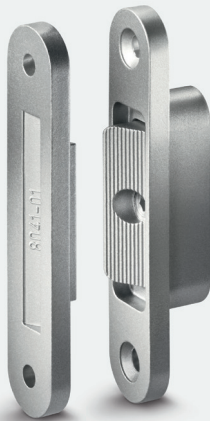
Accessories for the frame

For individual security, comfort and design requirements.

Hinge side security device

More burglar resistance for all-round secure doors.

Our KfV hinge side security devices offer effective and extremely easy-to-install solutions for increased burglar resistance. The interlocking teeth of the two wedge locking elements eliminate potential points of attack by making it virtually impossible to prise the door open, even on the hinge side. These additional security devices can be adapted to the airgap of the respective profile system.



Production benefits

- For timber, PVC or aluminium doors
- Quick and easy to install
- Consisting of two uniform, toothed wedge lock elements
- Can be flexibly adapted to the airgap of the respective profile system.

Frame parts with reinforcement plate

Special versions for higher stability.

A significantly greater burglar resistance is achieved due to the reinforcement plates with screw into the lining as well as partially into the masonry.



Production benefits

- Available for apartment building entrance doors with lining and cladding of different door systems in the various size variants
- For example, can be used as a latch or deadbolt plate or as a hinge side security device

Day latch

Release of the main lock latch so you can leave the house without a key.

With the KfV day latch, you can easily release the main lock latch by means of a mechanical locking mechanism via a locking slider to leave the house for a short period without using a key. Because doors that appear to be closed can be opened simply by "pushing" on them.



Production benefits

- For locking rails and striker plates with E-opener cut to length
- More cost-effective than an E-opener
- Quick and easy to install and can be adjusted even after installation
- For retrofit or for standard use with KfV frame parts
- Low installation dimension
- Can be used DIN right and DIN left

Bolt switch contact

Integrate VdS tested entrance doors into alarm systems.

With the bolt switch contact, entrance doors can be connected to an alarm or monitoring unit to control the open or locked status of the door. The system is invisible from the outside, certified in accordance with VdS Class C and wear-free because it functions without contact.



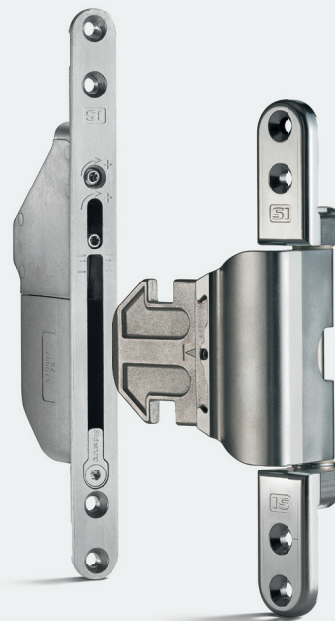
Production benefits

- Quick and easy installation in the locking rail or striker plate
- Replaces the Q adjustment, its adjustment range is retained
- Can be connected individually, in series or parallel
- For all KFV multi-point locks with hook bolt
- Also suitable for escape doors
- Easily adjusted at any time

axxent door hinge

The fully concealed hinge side for modern aluminium doors in a perfect design.

The design is elegant and timeless, but the assembly is quick and easy. The fully concealed assembly makes aluminium doors into discreet elements of design, thereby supporting the achievement of high-end living concepts. As a two-part design, only one person is needed to hang or lift-off the door sash and there is complete freedom for lateral, height and pressure adjustment.



Production benefits

- For aluminium doors up to 120 kg
- Readily accessible 3D adjustment with large adjustment ranges for very flexible lateral, height and pressure adjustment
- The two-part hinge with frame and sash part makes it particularly easy to hang and lift-off the door leaf
- Low level of profile milling required

SIEGENIA®
brings spaces to life

Head Office:
Industriestraße 1–3
57234 Wilnsdorf
GERMANY

Phone: +49 271 3931-0
Telefax: +49 271 3931-1333
info@siegenia.com
www.siegenia.com



You can find address details for our
international sites at: www.siegenia.com

SIEGENIA worldwide:

Austria Phone: +43 6225 8301
Benelux Phone: +31 613 143773
China Phone: +86 316 5998198
France Phone: +33 3 89618131
Germany Phone: +49 271 39310
Great Britain Phone: +44 2476 622000
Hungary Phone: +36 76 500810

India Phone: +91 124 4121647
Italy Phone: +39 02 9353601
Poland Phone: +48 77 4477700
Russia Phone: +7 495 7211762
South Korea Phone: +82 15445369
Switzerland Phone: +41 33 3461010
Turkey Phone: +90 216 5934151
Ukraine Phone: +38 044 4065793

Contact your distributor: